



# TITAN XT<sup>®</sup>

PREMIUM ARCHITECTURAL SHINGLES



THE MOST INNOVATIVE SHINGLE ON THE MARKET IS NOW CLASS 3 IMPACT RATED<sup>1</sup>  
FEATURING AN INDUSTRY-FIRST HIGH WIND WARRANTY WITH COVERAGE UP TO 160 MPH<sup>2</sup>

WHERE INNOVATION MEETS EXTREME TECHNOLOGY<sup>®</sup>

<sup>1</sup>PLEASE CONSULT TAMKO'S LIMITED WARRANTY AND APPLICATION INSTRUCTIONS FOR ANY REQUIREMENTS OR LIMITATIONS. <sup>2</sup>TITAN XT<sup>®</sup> SHINGLES ARE CLASSIFIED BY UL FOR COMPLIANCE WITH UL 2218 CLASS 3 IMPACT RESISTANCE.





# TITAN XT

## PREMIUM ARCHITECTURAL SHINGLES

Titan XT<sup>®</sup> shingles feature some of the most advanced innovative technology in the industry. With powerful engineering, Titan XT shingles are designed to offer an advantage for both homeowners and contractors, combining in-demand product features into one **Extreme Technology** shingle designed to help weather extreme conditions.



See how Titan XT<sup>®</sup> shingles perform at [tamko.com/titanxt](http://tamko.com/titanxt)

WHERE INNOVATION MEETS EXTREME TECHNOLOGY<sup>™</sup>

**160 MPH WIND WARRANTY**  
Inspired by the combined performance of our AnchorLock<sup>™</sup> layer and Advanced Fusion<sup>™</sup> sealants to help the shingle hold fast.

**CLASS 3 IMPACT RATED**  
Titan XT<sup>®</sup> shingles qualify for a UL 2218 Class 3 Impact Rating.

**RAPID FIRE ZONE<sup>®</sup>**  
A clearly defined expanded nailing zone for fast and easy installation.

**ULTRAMAX WEATHERING<sup>™</sup> LAYER**  
Proprietary engineering to increase top coating where it's needed most, for a weathering layer of asphalt designed for protection.

**ADVANCED FUSION<sup>™</sup> SEALANTS**  
A family of sealants, specifically designed to be sticky, even in cooler weather, fusing quickly and helping hold fast.

**APEX COLOR TECHNOLOGY**  
Proprietary granule blends and advanced color drops create superior color.

**PROTECTIVE GRANULES**  
An embedded layer of ceramic-fired granules offering both beauty and protection.

**POWER CORE<sup>®</sup>**  
Fiberglass mat core engineered to help resist tearing and cracking.

**ANCHORLOCK<sup>™</sup> LAYER**  
This unique poly-fabric reinforces the shingle for an added layer of protection and provides an anchor for the nails to embed in, locking them tightly to the deck.

# WHAT COULD A 160 MPH WIND WARRANTY DO FOR YOU?

The **WINDGUARD<sup>™</sup> WARRANTY** - up to 160 MPH with only 4 nails in the expanded nailing zone.

Introducing an industry first — a high wind warranty with coverage up to **160 MPH**, with only four nails installed in the expanded nailing zone, when using TAMKO<sup>®</sup> Starter<sup>1</sup>. Inspired by the combined performance of our AnchorLock<sup>™</sup> layer and Advanced Fusion<sup>™</sup> sealants to help the shingle hold fast.



Titan XT<sup>®</sup> shingles feature a reinforcing strip of polyester fabric on the back of the shingle to provide added anchoring for the expanded nailing zone.



Up to 500% larger than our standard Heritage<sup>®</sup> nailing area<sup>\*</sup>

STANDARD NAILING AREA

<sup>\*</sup>Compared with TAMKO's Heritage<sup>®</sup> shingles manufactured in KS, MD, MO and TX.

<sup>1</sup>Please consult TAMKO's Limited Warranty and Application Instructions for any requirements or limitations.





**TAMKO**

**WHATEVER YOUR TASTE OR STYLE,  
TAMKO HAS YOU COVERED.**

TAMKO has the best shingle colors because we do things differently. Proprietary blends and color drops create vibrant color and more natural shadowtones.

THE  
**BEST**  
COLORS

**With two distinct color palettes to choose from,  
TAMKO has just the right color to beautify your home:**



**AMERICA'S**  
NATURAL COLORS



**CLASSIC**  
COLORS



Black Walnut



Rustic Black

### **BOLD & BEAUTIFUL**

America's Natural Colors bring the vibrant tones of the American landscape to your home. If you want your roof to make a bold and beautiful visual statement, choose from America's Natural Colors.

### **SUBTLE & SOPHISTICATED**

For those who prefer a softer, more even-toned look for their roof, choose one of TAMKO's Classic Colors featuring the subtle, sophisticated color blends that have long made TAMKO an industry favorite.

*The shingle images above show the difference between America's Natural Colors and Classic Colors. Black Walnut and Rustic Black are both "black" shingles. Look closely and you can see Black Walnut includes vibrant splashes of color that will draw the eye to the roof.*

## **SEE IT ON YOUR HOME**

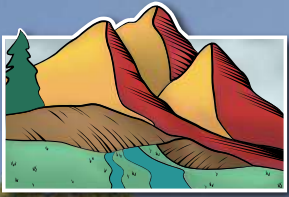
"Try on" TAMKO shingle colors and styles with the TAMKO® Roof Visualizer to find the right fit for your home. Customize sample homes, or upload a street view photo of a home to get started.



See how TAMKO shingles could look on your home at [tamko.com/visualizer](https://tamko.com/visualizer)







# AMERICA'S

NATURAL COLORS





Black Walnut



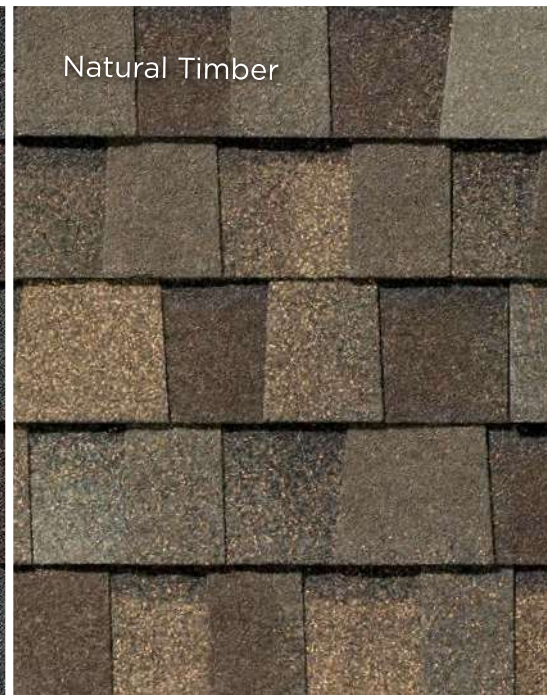
Natural Timber



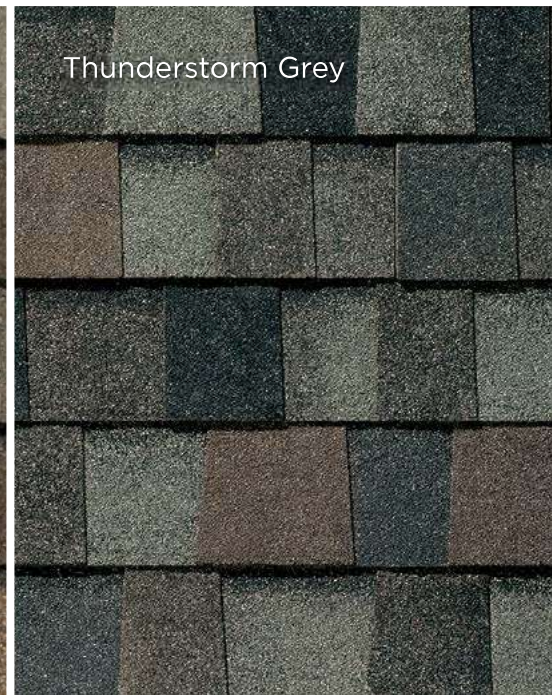
Black Walnut



Natural Timber



Thunderstorm Grey





Rustic Black



CLASSIC  
COLORS



Olde English Pewter



Desert Sand



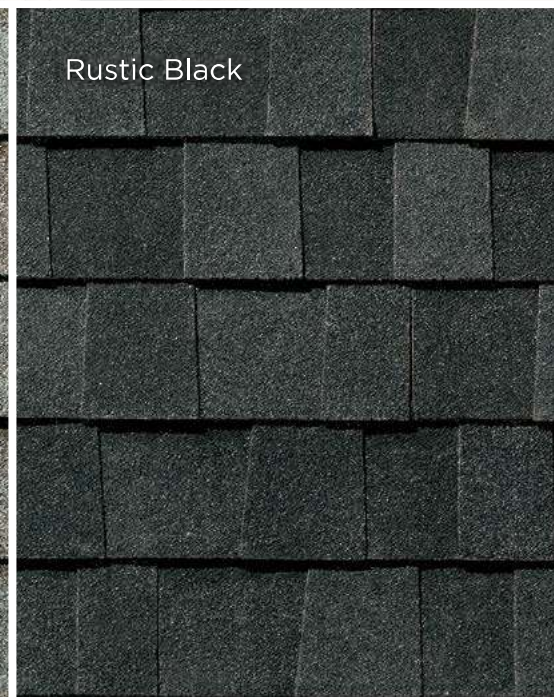
Desert Sand



Olde English Pewter



Rustic Black





Rustic Redwood



Rustic Slate



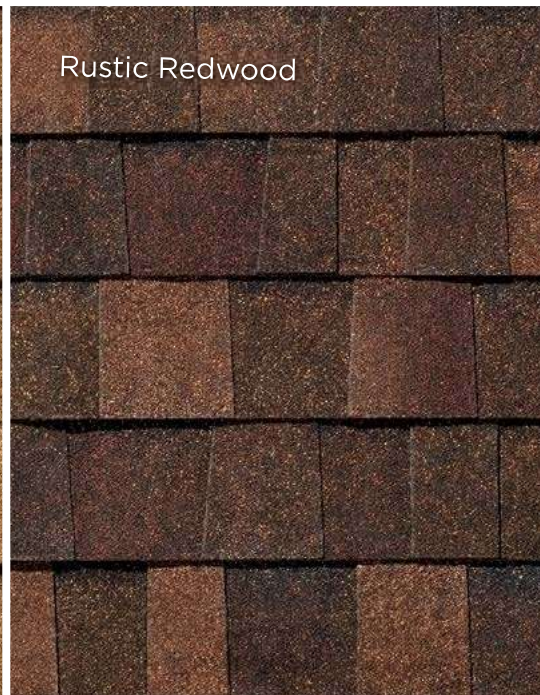




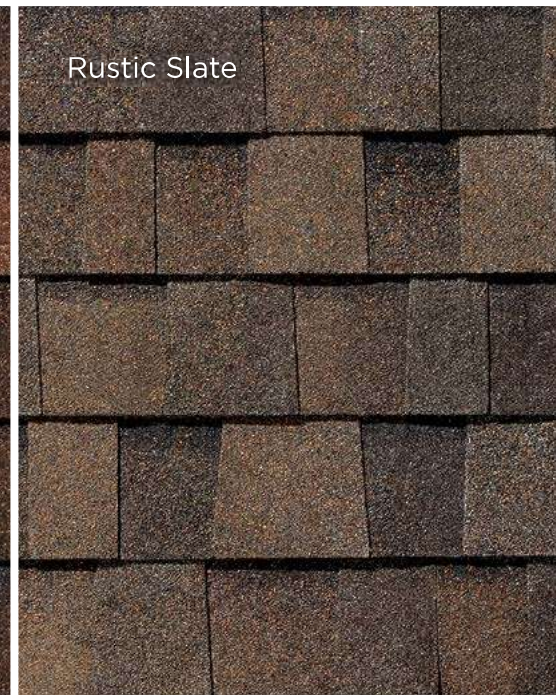
Rustic Cedar



Rustic Redwood



Rustic Slate





Virginia Slate



Shadow Grey







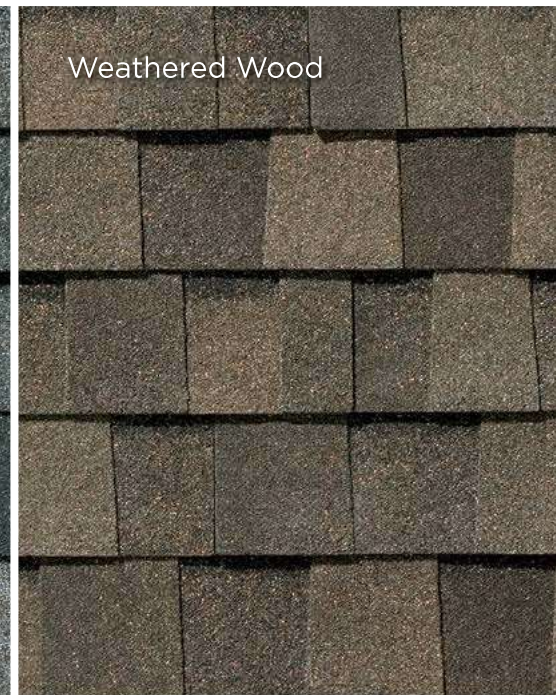
Shadow Grey



Virginia Slate



Weathered Wood







## BUILDING PRODUCTS FOR THE PROFESSIONAL.

TAMKO Building Products LLC is a leading independent manufacturer of residential roofing shingles crafted with American pride for more than 75 years. At TAMKO, the popular Heritage® and Proline shingle series features the best roofing colors on the market that are backed by a brand name recognized for its rich history, core values of honesty and integrity, quality products and processes, authority with building professionals and support for its community. For more information about TAMKO, visit our website at [www.tamko.com](http://www.tamko.com).



1-800-641-4691  
[tamko.com](http://tamko.com)

### PROLONG

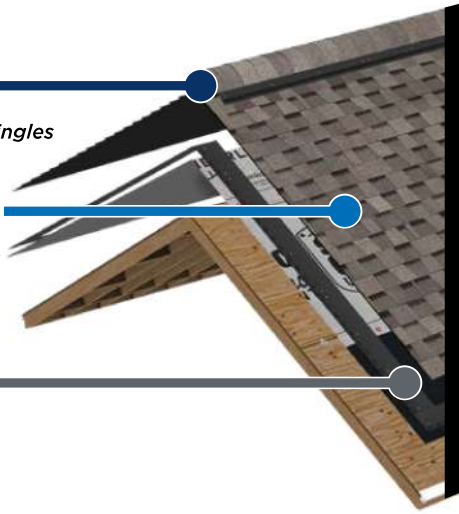
Ventilation and Hip & Ridge Shingles

### PERFORM

Shingles — HERITAGE® • VINTAGE®  
TITAN XT® • STORMFIGHTER FLEX™  
ELITE GLASS-SEAL®

### PROTECT

Waterproofing, Underlayments  
and Starter Shingles



Insist on TAMKO® products for the full TAMKO Complete™ Roof System. TAMKO products are specifically designed to work together, building layer upon layer of protection.

### Titan XT® shingles meet the following classifications

**UL Listed for:**  
Class A Fire Resistance

**UL Classified:**  
Wind Resistance  
Impact Resistance  
ASTM D3462 and ICC-ES  
Acceptance Criteria AC438

**Tested in Compliance with:**  
UL 790/ASTM E 108, Class A  
ASTM D3161, Class F  
ASTM D7158, Class H  
UL 2218 Class 3 Impact Resistance†  
ASTM D3462  
ICC-ES Acceptance Criteria AC438

**UL Evaluation Reports:**  
UL Evaluation Report  
ER2919-01  
UL Evaluation Report  
ER2919-02

**Florida Building Code  
Product Approval**  
FL 18355  
FL 35321  
**Miami-Dade County  
Product Control Approved**

Desert Sand and Olde English Pewter are listed by the Cool Roof Rating Council® (CRRC)

## SHINGLE COLOR SELECTION TIPS

For more information on shingle color selection tips and available colors by zip code, visit [tamko.com](http://tamko.com)

#### START YOUR COLOR SEARCH WITH BROCHURES & VISUALIZATION PROGRAMS.



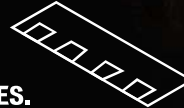
The printed colors you see in any brochure or digital visualization program are only as accurate as current printing and digital technology allows.

#### VIEW AN ACTUAL ROOF INSTALLATION.



Shingles may look different installed on a roof compared to viewing only one shingle. Also, shingle colors can appear differently during different times of day, in different amounts of sunlight (full, partial, etc.).

#### VIEW ACTUAL SHINGLES.



Viewing actual shingles is the only way to see all the nuances in color that will be represented on your roof once the project is complete.

#### CHECK YOUR SHINGLES BEFORE INSTALLATION.



TAMKO is not responsible for color claims where the wrong color is installed on a roof. It is better to be safe and perform a final in-person check of the shingles to confirm product and color before they are installed.

Certain colors and products may not be available in your area. Information included in this item was current at the time of printing. To obtain a copy of the most current version of this item, visit us online at [tamko.com](http://tamko.com) or call us at 1-800-641-4691.

SHINGLES BEGIN TO AGE AS SOON AS THEY ARE EXPOSED TO NATURE. BUILDINGS EXPERIENCE AGING FACTORS DIFFERENTLY, SO IT IS DIFFICULT TO PREDICT HOW LONG SHINGLES WILL LAST. TAMKO PROVIDES A LIMITED WARRANTY FOR MANY PRODUCTS, THAT INCLUDES A BINDING ARBITRATION CLAUSE AND OTHER TERMS AND CONDITIONS WHICH ARE INCORPORATED HEREIN BY REFERENCE. YOU MAY OBTAIN A COPY OF THE LIMITED WARRANTY AT [TAMKO.COM](http://TAMKO.COM) OR BY CALLING 1-800-641-4691.

†TITAN XT SHINGLES ARE CLASSIFIED BY UL FOR COMPLIANCE WITH UL 2218 CLASS 3 IMPACT RESISTANCE. UL 2218 TESTING UTILIZES A DROPPED STEEL BALL WHICH MAY NOT CORRELATE WITH REAL WORLD ROOFTOP EXPERIENCE WITH THE IMPACT OF STORM DRIVEN HAIL OR OTHER OBJECTS.